



# ENVIRONMENTAL

A Division of Therma-Tron-X, Inc.

## IRON REMOVAL UNITS

Regular pickle bath dumps will be a thing of the past with the installation of an acid pickle bath recycling system from **TTX Environmental**. This equipment not only removes dissolved metal from your pickling solution, it simultaneously restores acid content to proper operational concentrations.

Steel pickling results in the buildup of metals and metal oxides in the tank, rendering the acid pickle bath ineffective. An iron removal unit uses the ion exchange process to remove this buildup of dissolved iron, allowing the acid to be reused indefinitely.

Taking the  
Waste out of  
Wastewater



Different pickling processes employ different acids. **TTX Environmental** builds pickle acid recycling systems for use with sulfuric, citric, hydrochloric and phosphoric acids. Configuration to match your production needs include simplex, duplex and triplex systems, or any design that meets your bath recycling requirements. Pre-filtration requirements can easily be met with skid-mounted pre-filters and supply pumps.

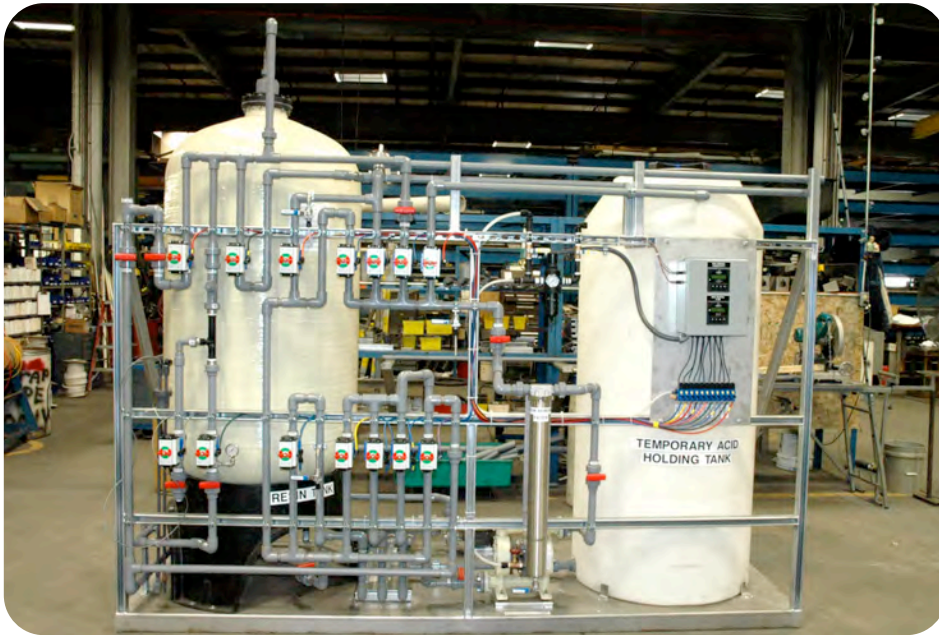
Save money and maintenance by recycling your pickle bath - you may never have to dump it again.



40 Cu Ft Double (Duplex) Skid Mounted Iron Removal Unit

***TTX Environmental** will design acid recycling equipment to fit the specific needs of your products and processes. Whether designed around an existing finishing system or installed with a new system, we have the experience it takes to get the job done right the first time.*

**Call us today about an evaluation of your waste treatment needs**



20 Cu Ft Single (Simplex) Skid Mounted Iron Removal Unit

Construction of **TTX Environmental** iron removal units feature state of the art, user friendly controls; low-pressure drop ball valves; and complete skid mounting.

All equipment is tested at our facility prior to shipment. Installation is completed in a few simple steps: connect the inlet and outlet piping of the iron removal unit to the acid pickle tank; hook up power to the control panel; link low solids water supply to the regeneration piping inlet; and tie in the regeneration waste outlet piping to the existing waste treatment system or pH adjust system.

*COMPLETE MANUALS WITH  
DRAWINGS INCLUDED IN  
BOTH HARD COPY AND  
ELECTRONIC VERSIONS*



Graduated (Progressively Finer Filtration) Pickle Bath Filtration Skid

1155 S. Neenah Avenue  
Sturgeon Bay, WI 54235  
Phone: (920)743-6568  
Fax: (920) 743-5486  
Website: [www.ttxinc.com](http://www.ttxinc.com)  
E-mail: [sales@ttxinc.com](mailto:sales@ttxinc.com)



**ENVIRONMENTAL**

*A Division of Therma-Tron-X, Inc.*